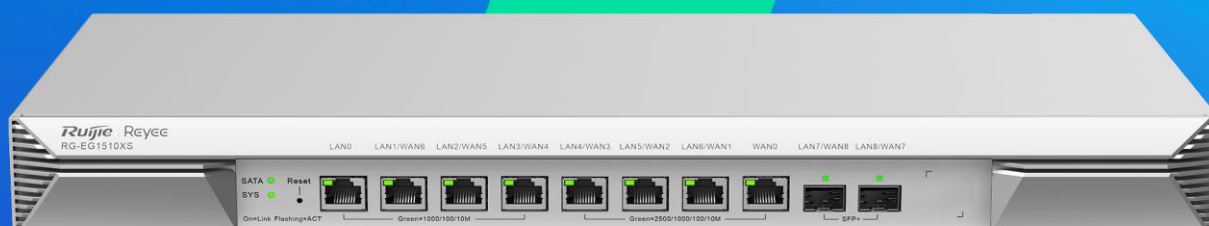


# RG-EG1510XS

The Powerful EG go BIG, Next Level  
Flagship Business Router For Up To 1500  
Clients



## Highlights

- Supreme Capacity Up to 1500 concurrent Clients
- The Brilliant Brain of Network Management
- Freely Open to Third-Party Authentication Integration
- Easy Intranet Connection
- Terminal Recognition for Easy Management & Bandwidth Management
- Easy VPN Configuration

# Highlight Features

## The Powerful EG go BIG

Next Level Flagship Business Router For Up To 1500 Clients



**Ruijie Reyee RG-EG1510XS**

- 1500 Concurrent Clients
- 1000 VPN Tunnels
- 4Gbps Throughput
- 1TB Storage, 4-5 Months Syslog

## Supreme Capacity with Tremendous Performance Router Can Fit Multiple Large Scenario Perfectly

| Scenarios   | Concurrent Clients  |  |
|---|---|--|
|  <p>Boutique Hotels</p>                        |  <p>HQ with Multi-Branches</p>   |  <p>Staff Accomodation</p>        |
|  Third-party Portal Authentication Integration |  IPsec, OpenVPN, LZTP, PPTP, etc |  Authentication and Authorization |

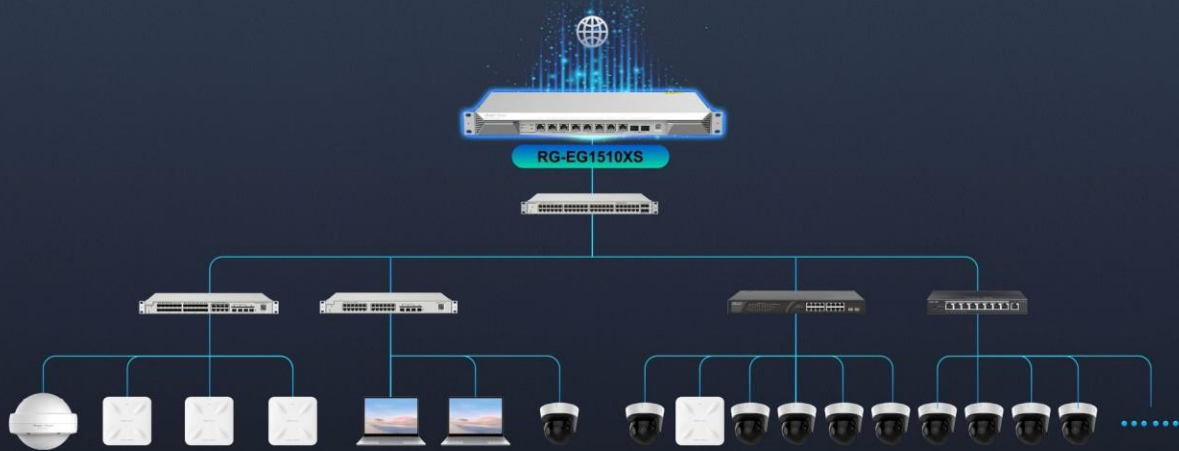
## Supreme Capacity with Tremendous Performance Router Can Fit Multiple Large Scenario Perfectly

| Scenarios   | Concurrent Clients   |  |
|---|--|--|
|  |  |  |
| <p>Supreme Capacity Up to <b>1500</b> Clients Can Access</p>                        |  |  |

# Highlight Features

## The Brilliant Brain of Network Management

Link up all Reeye devices intelligently in one click and make management in unity



## Easy Intranet Connection

The management console uniformly display all third-party devices that enabled easy intranet connection and link to its web interface by one click




## Freely Open to Third-Party Authentication Integration



# Highlight Features


## Terminal Recognition & Flow Control

Accurately identify the third-party devices, quickly locate high-load users and tuning network



**Low Speed loading**

Progress bar: 10% (1 blue segment, 9 grey segments)



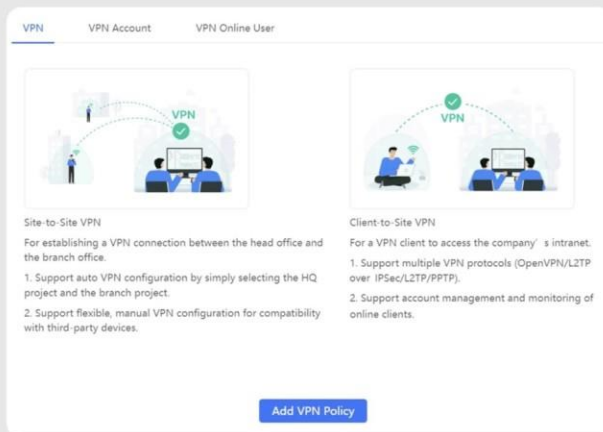
**High Speed working**

Progress bar: 100% (10 blue segments)



## Easy VPN Configurations

Three steps to configure VPN easily and stably



VPN VPN Account VPN Online User

Site-to-Site VPN

For establishing a VPN connection between the head office and the branch office.

1. Support auto VPN configuration by simply selecting the HQ project and the branch project.
2. Support flexible, manual VPN configuration for compatibility with third-party devices.

Client-to-Site VPN

For a VPN client to access the company's intranet.

1. Support multiple VPN protocols (OpenVPN/L2TP over IPsec/L2TP/PPTP).
2. Support account management and monitoring of online clients.

Add VPN Policy

Step1: Add VPN policy



Add VPN Policy

Status:  Enable

Remark: INTL\_Live\_Spec

Purpose: 

Role:  Headquarter  Branch

VPN Mode:  Auto IPsec  Manual IPsec

Headquarters: INTL\_Live

Step2: Select a suitable mode

HQ WAN:  VPN-INTL-Live

HQ Subnet: 192.168.0.0/24

Branch Project: Project A

Cancel Add

Step3: Enter the IP Address of the corresponding server

## 2.5" 1TB SATA HDD Extension for 4~5 Months Syslog Storage

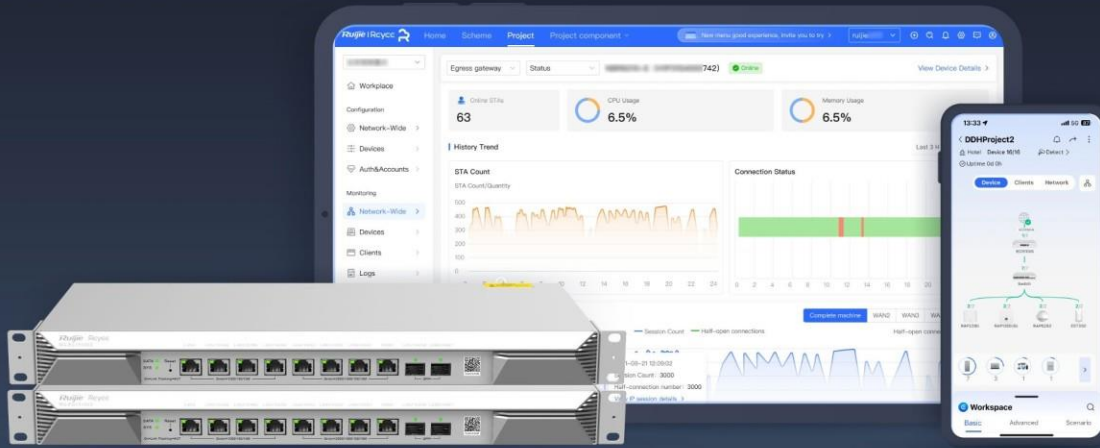
Providing more storage spaces to keep tracking syslogs for compliance audit.



# Highlight Features

## Cloud, Make Your Business Easy

- Self-organization network
- Scenario-based configuration guide
- Marketing portal authentication
- Quickly advanced service setup by APP
- Cloud APP maintenance remotely



# Hardware Specifications

| Model                                  | RG-EG1510XS   |
|--|---|
| <b>Port Specifications</b>             |   |
| Total number of optical ports          | 2   |
| Total number of RJ45 ports             | 8   |
| Number of 10/100/1000BASE-T ports      | 4   |
| Number of 10/100/1000/2500BASE-T ports | 4   |
| Number of 10GE SFP+ ports              | 2   |
| Maximum number of LAN ports            | 9   |
| Maximum number of WAN ports            | 9   |
| Number of fixed LAN ports              | 1   |
| Number of fixed WAN ports              | 1   |
| Number of LAN/WAN ports                | 8   |
| LEDs                                   | 1 x system status LED<br>10 x Ethernet port LEDs<br>1 x HDD LED |
| Reset button                           | 1   |
| <b>System Specifications</b>           |   |
| CPU                                    | Quad-core processor, 1.8 GHz clock frequency per core           |
| Flash memory                           | 128 MB  |
| RAM                                    | 4 GB  |
| Hard disk                              | 1 x standard SATA 3.0 HDD                                       |
| <b>Power Supply and Consumption</b>    |   |
| Power supply                           | Fixed power supply  |
| Maximum power consumption              | 20 W  |
| <b>Dimensions and Weight</b>           |   |
| Package dimensions (W x D x H)         | 605 mm x 480 mm x 315 mm (23.82 in. x 18.9 in. x 12.4 in.)      |

## / Hardware Specifications

| Model                              | RG-EG1510XS   |
|------------------------------------|---|
| Product dimensions (W x D x H)     | 440 mm x 210 mm x 43.6 mm (17.32 in. x 8.27 in. x 1.72 in.)   |
| Shipping weight                    | 3.82 kg (8.42 lbs)  |
| Weight                             | 3 kg (6.61 lbs)   |
| <b>Environment and Reliability</b> |   |
| Cooling                            | Natural cooling   |
| Fan                                | Fanless design  |
| Mounting options                   | Rack<br>Note: The device occupies 1 U of the rack space.  |
| Operating humidity                 | 10% RH to 90% RH (non-condensing)   |
| Operating temperature              | 0°C to 40°C (32°F to 104°F)   |
| Storage humidity                   | 5% RH to 95% RH (non-condensing)  |
| Storage temperature                | -40°C to +70°C (-40°F to +158°F)  |
| Surge protection                   | Service port: ±6 kV for common mode<br>Power connector: ±6 kV for common mode and ±6 kV for differential mode |

# Software Specifications

| Model   | RG-EG1510XS   |
|---|---|
| <b>System Performance Capacity</b>  |   |
| Maximum number of concurrent sessions   | 300000  |
| Recommended number of concurrent clients                                      | 1500  |
| Throughput  | 4000 Mbps   |
| <b>Basic Configurations</b>   |   |
| AC mode   | Yes   |
| Automatically identifying the Internet access mode and obtaining IP addresses | Yes   |
| Automatically learning the PPPoE username and password of other routers       | Yes   |
| Configuration backup  | Yes   |
| Internet access mode  | Static IP address<br>Static IPv6 address<br>Dynamic IP address<br>Dynamic IPv6 address<br>PPPoE   |
| Local upgrade   | Yes   |
| Log upload  | Yes   |
| Online upgrade  | Yes   |
| Restoring factory defaults  | Yes   |
| System language   | English, Chinese, Turkish, Arabic, Vietnamese, Thai, Indonesian, Latin American Spanish, Brazilian Portuguese, Russian, French, German, European Spanish, Italian, and Polish |
| <b>Authentication</b>   |   |
| Portal authentication   | Yes   |
| One-click authentication  | Yes   |
| Password authentication   | Yes   |

## Software Specifications

| Model  | RG-EG1510XS |
|--|-------------|
| SMS-based authentication   | Yes         |
| Voucher authentication supported by Ruijie Cloud portal page       | Yes         |
| Cloud portal authentication  | Yes         |
| Local portal authentication  | Yes         |
| QR code authentication   | Yes         |
| Custom portal page   | Yes         |
| Account-based authentication supported by Ruijie Cloud portal page | Yes         |
| CHAP, MS-CHAPv1, MS-CHAPv2   | Yes         |
| Delivery through Ruijie Cloud portal page                          | Yes         |
| 802.1X authentication  | Yes         |
| MAC address-based authentication                                   | Yes         |
| PPPoE server   | Yes         |
| Number of accounts supported by the PPPoE server                   | 1500        |
| Number of concurrent clients supported by the PPPoE server         | 1000        |
| RADIUS flow control authorization                                  | Yes         |
| PAP  | Yes         |
| RADIUS authentication  | Yes         |
| RADIUS client  | Yes         |
| RADIUS accounting based on time or traffic                         | Yes         |
| RADIUS flow control authorization                                  | Yes         |
| RADIUS proxy server  | Yes         |
| RADIUS traffic quota authorization                                 | Yes         |

## Software Specifications

| Model  | RG-EG1510XS |
|--|-------------|
| RADIUS user group authorization                        | Yes         |
| Third-party authentication                             | Yes         |
| <b>Ethernet Interface</b>                              |             |
| Avoiding IP address conflicts on WAN interfaces        | Yes         |
| Multiple IP addresses on a WAN port                    | Yes         |
| Load balancing   | Yes         |
| MAC address cloning                                    | Yes         |
| Multiple WAN interfaces on the same network segment    | Yes         |
| PPPoE clients  | Yes         |
| Scheduled PPPoE reconnection                           | No          |
| <b>Ethernet Switching</b>                              |             |
| Configuring multiple VLANs upon configuration delivery | No          |
| Link aggregation                                       | No          |
| LLDP   | No          |
| VLAN   | Yes         |
| VLAN configuration supported on LAN ports              | Yes         |
| Super-VLAN   | No          |
| Configuring the same VLAN tag for multiple WAN ports   | No          |
| VLAN priority  | Yes         |
| <b>Gateway Features</b>                                |             |
| WAN failover   | Yes         |
| Application priority                                   | Yes         |

# Software Specifications

| Model  | RG-EG1510XS |
|--|-------------|
| Application recognition                            | Yes         |
| Behavior management                                | Yes         |
| QoS  | Yes         |
| Time-based blocking policy                         | Yes         |
| IP address-based blocking policy                   | Yes         |
| Website filtering: custom URL                      | Yes         |
| Traffic audit                                      | Yes         |
| URL audit log                                      | Yes         |
| Audit log server                                   | Yes         |
| Audit log storage                                  | Yes         |
| Uploading audit logs to a server                   | Yes         |
| <b>IP Routing</b>                                  |             |
| Application-based routing                          | Yes         |
| Bandwidth aggregation                              | Yes         |
| BGP  | Yes         |
| BGP4   | Yes         |
| BGP4+  | Yes         |
| ECMP   | No          |
| IPv4 static route                                  | Yes         |
| IPv6 PBR   | Yes         |
| Route selection based on national address database | Yes         |
| IPv6 static route                                  | Yes         |
| IS-ISv4  | No          |
| IS-ISv6  | No          |

## Software Specifications

| Model  | RG-EG1510XS |
|--|-------------|
| Load balancing based on flows                | Yes         |
| Load balancing based on source IP addresses  | Yes         |
| Load balancing based on the interface weight | Yes         |
| Route selection by link quality              | Yes         |
| OSPFv2                                       | Yes         |
| OSPFv3                                       | Yes         |
| RIP  | Yes         |
| RIPng  | Yes         |
| IP Service                                   |             |
| 3322.org                                     | Yes         |
| ALG  | Yes         |
| ARP binding                                  | Yes         |
| Maximum number of ARP entries                | 4096        |
| Proxy ARP                                    | No          |
| Cloudflare                                   | Yes         |
| DHCP client                                  | Yes         |
| DHCP server                                  | Yes         |
| DHCP relay                                   | No          |
| Option 43                                    | Yes         |
| Option 138                                   | Yes         |
| Static/Dynamic NAT                           | Yes         |
| NAT-PT                                       | No          |
| NAT loopback                                 | Yes         |

# Software Specifications

| Model  | RG-EG1510XS |
|--|-------------|
| DNS client   | Yes         |
| DNS proxy  | Yes         |
| DNS server   | Yes         |
| No-IP DNS  | Yes         |
| GRE tunnel   | No          |
| IPTV   | Yes         |
| IPv4 ping  | Yes         |
| IPv6   | Yes         |
| IPv6 ping  | Yes         |
| Number of port mapping entries                             | 512         |
| Port mapping   | Yes         |
| DDNS   | Yes         |
| Ruijie DDNS  | Yes         |
| Alibaba Cloud DDNS   | Yes         |
| UPnP   | Yes         |
| <b>Network Management and Monitoring</b>                   |             |
| Web management   | Yes         |
| Ruijie Cloud management                                    | Yes         |
| Management on Ruijie Reyee App                             | Yes         |
| Remotely monitoring devices through Ruijie Reyee App       | Yes         |
| Restarting devices through Ruijie Reyee App                | Yes         |
| Upgrading device software version through Ruijie Reyee App | Yes         |
| Fault diagnosis  | Yes         |

## Software Specifications

| Model   | RG-EG1510XS  |
|---|--|
| FTP client (IPv4 address)                       | No   |
| FTP server (IPv4 address)                       | No   |
| TFTP client (IPv4 address)                      | Yes  |
| TFTP server (IPv4 address)                      | No   |
| HTTPS login                                     | Yes  |
| NTP client                                      | Yes  |
| NTP server                                      | No   |
| Scheduled device restart                        | Yes  |
| SNMPv1, v2c, and v3                             | Yes  |
| SON   | Yes  |
| SSH   | No   |
| Telnet  | No   |
| Web login information                           | Default IP Address: 192.168.110.1<br>Default Password: admin   |
| Maximum number of managed devices (router mode) | AP and NBS series: 1000<br>ES series: 128<br>Note: The maximum number of managed devices varies with each device series. |
| Maximum number of managed devices (AC mode)     | AP and NBS series: 1000<br>ES series: 128<br>Note: The maximum number of managed devices varies with each device series. |
| <b>Reliability</b>                              |  |
| Stacking  | No   |
| VRRP  | No   |
| <b>SD-WAN</b>                                   |  |
| SD-WAN  | Yes  |
| SD-WAN performance                              | 1200 Mbps  |

# Software Specifications

| Model  | RG-EG1510XS |
|--|-------------|
| Number of tunnels supported by SD-WAN  | 3000        |
| Maximum number of SD-WAN branches  | 1000        |
| Active/Standby mode (automatically switching to the standby interface when the active interface fails) | Yes         |
| Bypass networking for a device in AP mode  | No          |
| Centralized traffic forwarding policy  | Yes         |
| Multi-WAN link bundling efficiency (lab data)  | $\geq 80\%$ |
| <b>Security</b>  |             |
| ACL  | Yes         |
| DHCP snooping  | No          |
| Malformed packet attack defense  | Yes         |
| Fragmentation attack defense   | Yes         |
| Teardrop attack defense  | Yes         |
| LAND attack defense  | Yes         |
| SYN flood attack defense   | Yes         |
| Smurf attack defense   | Yes         |
| IP attack defense  | Yes         |
| Disabling ping   | Yes         |
| Stateful ACL   | Yes         |
| IP-MAC binding   | Yes         |
| Network sharing prevention   | Yes         |
| Security log   | Yes         |
| Security zone  | Yes         |

## Software Specifications

| Model  | RG-EG1510XS |
|--|-------------|
| User group-based connection limiting                           | Yes         |
| VPN  |             |
| IPsec VPN  | Yes         |
| IPsec VPN bandwidth  | 1100 Mbps   |
| Maximum number of branches in IPsec VPN networking             | 1000        |
| L2TP VPN   | Yes         |
| L2TP VPN bandwidth   | 1150 Mbps   |
| Maximum number of branches in L2TP VPN networking              | 1000        |
| OpenVPN  | Yes         |
| OpenVPN bandwidth  | 350 Mbps    |
| Maximum number of branches in OpenVPN networking               | 1000        |
| PPTP VPN   | Yes         |
| PPTP VPN bandwidth   | 1700 Mbps   |
| Maximum number of branches in PPTP VPN networking              | 1000        |
| SSL VPN  | No          |
| Easy VPN 1.0   | No          |
| Number of VPN accounts for L2TP, PPTP, and OpenVPN             | 1500        |
| WireGuard server   | Yes         |
| WireGuard client   | Yes         |
| WireGuard performance  | 1200 Mbps   |
| Number of concurrent tunnels supported by the WireGuard server | 1000        |
| WLAN   |             |

## Software Specifications

| Model   | RG-EG1510XS |
|---|-------------|
| Maximum number of APs (AC mode)               | 1000        |
| Maximum number of devices that can be managed | 128         |
| Wireless Intelligent Optimization (WIO)       | Yes         |

## Package Contents

| Model                            | RG-EG1510XS  |
|----------------------------------|--|
| <b>Accessories</b>               |  |
| <b>Rack-mount bracket</b>        | 2  |
| <b>Power cord</b>                | 1 x 1.8 m (70.86 in.)                                |
| <b>Power cord retention clip</b> | 1  |
| <b>Rubber pad</b>                | 4  |
| <b>Screw</b>                     | 8 X M4 x 8 mm cross recessed countersunk head screws |
| <b>Manual</b>                    |  |
| <b>User Manual</b>               | 1  |
| <b>Warranty Card</b>             | 1  |

*Ruijie* | REYEE

 Redefine your easy network



**Ruijie Networks Co., Ltd.**

Official Website: <https://Reyee.Ruijie.com>